

Shoreline Ramblings

A Newsletter of the Pleasant Lake Improvement Association



Find us online at www.pliamn.com and www.facebook.com/pleasantlake

Late 2023

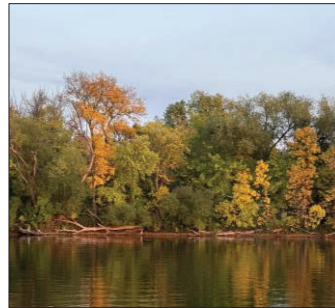
President's Letter

KEVIN BERGSTROM

I am completing my second year as President, and the board has continued to build on our previous successes. The new president for 2024-2025 will be Kyle Bauman. Kyle has been on the board for several years, and has worked extensively with our Contractors, the DNR, and the County concerning AIS. I have every confidence in Kyle leading PLIA starting in January.

We continue to aggressively treat AIS, concentrating on controlling Starry Stonewort, and have it isolated to the County landing. Your donations are very important to our management of the AIS. Remember you now have the option of using PayPal! It is as easy as could be! Search for Pliamn@yahoo.com in PayPal or use the 'Donate' button at www.PLIAMn.com.

The board is currently looking for a few people willing to take on a Director, Treasurer, or Vice President position. We need people who are interested in helping to preserve Pleasant Lake for generations to come. Worried about making a huge time commitment? We have 4 to 5 meetings a year – and for most we can ZOOM if that works better for you. If you have any interest or questions, PLEASE contact PLIAMN@yahoo.com! It has been a pleasure to work with our volunteer board members, and to do what is best for Pleasant Lake.



Fall Membership Update

KELLI BRONDER, Treasurer

We are happy to report that 96 of our 127 properties paid their dues this year (about 75%)! Thank you to those who continue to pay dues, and those that continue to give above and beyond their dues so that we can continue to enjoy the lake life.

If you haven't sent your dues check yet, or feel compelled to give extra this year, please feel free to do so by sending a check via mail (PO Box 71, Annandale, MN 55302) or by using PayPal (Pleasant Lake Improvement Association, Inc.!) We continue to have our 501(c)(3) IRS status which makes your contributions tax deductible.

If you have an IRA and need to make a Required Minimum Distribution, please consider a Qualified Charitable Distribution (QCD) to the PLIA. A QCD may offer you significant tax savings. Talk to your financial professional today about a QCD for our lake association. As always, thank you so much for your donations!

Community Calendar

Annandale Tree Lighting Event

Saturday, November 25

5:00 pm - 5:30 pm

Clocktower Park

Small Business Saturday

Saturday, November 25

9:00 am - 5:00 pm

Support Local Businesses

Pioneer Park Village Christmas

Sunday, December 3

9:00 am - 1:00 pm

Pioneer Park

Main Street Holiday

Saturday, December 9

1:00 pm - 5:30 pm

Holiday Lights Parade

Saturday, December 9

5:30 pm - 6:00 pm

Oak Avenue North

CPR Holiday Train

Wednesday, December 13

7:15 pm

Oak Avenue Crossing

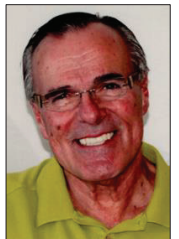
Annandale Lions Youth Fishing Contest

TBD – February

Pleasant Lake

Thank You

As Dave Lundberg leaves his position as Director, the PLIA Board would like to say 'thank you' for your years of service. We appreciate all you have done for the Pleasant Lake Improvement Association!



Summer Fun

The geese are honking and the leaves are turning – the sights and sounds of Fall. We have been busy pulling boats and docks, clearing off decks and patios, and cleaning out gardens. We are definitely in our transition period before the ice houses and snowmobiles make their appearance. So, let's take a look back on our summer fun of 2023.



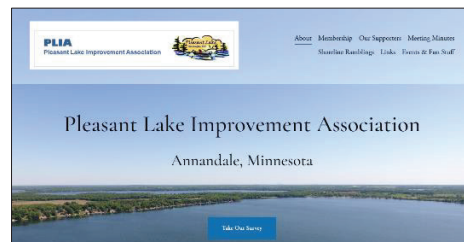
A Fresh Look for the PLIA Website

Have you seen the new PLIA website? It has the PLIA board meeting minutes, past newsletters, links to PayPal for easy membership and water quality donations, and more! We even have a PLIA survey about social engagement and communication available. Check it out – PLIAMN.com. Do you think we should add something? Let us know!

Thank you to Beth-Alison Berggren for all of her work on this!

Don't forget to follow **PLIA** on Facebook! A huge 'thank you' to those who follow PLIA already!

Interested in joining the **Pleasant Lake Community Bulletin Board, Annandale, MN** on Facebook? Make a request. Reminder: this group is a private group for Pleasant Lake Residents and families. If we don't recognize your name, we won't approve you. We might need a 'heads up' if you are new to the lake.



Pleasant Lake Report

ALICIA O'HARE, WRIGHT SWCD

Congratulations on 16 years of data! Long-term trend data is essential for analyzing a lake's health and water quality trajectory. Pleasant Lake is a lovely lake and we at Wright SWCD greatly admire and appreciate the dedication to data of its residents. Volunteers have collected three key points of data over the years. Total Phosphorus, chlorophyll-a and secchi disc depth. But what does it all mean?!

Phosphorus is a nutrient that is essential for plant growth. Too much phosphorus usually means excess plant growth and green water. This is usually the metric water planners use when categorizing a lake as impaired for nutrients. Pleasant Lake's average total phosphorus (21.6 ug/L) is about half the threshold for impairment (40ug/L).

Chlorophyll is the green substance in plants that make them green. So, in a lake the more chlorophyll the more plants/algae are present in the lake. Pleasant Lake's chlorophyll-a levels (6.7 ug/L) are about one-half of the threshold to consider the lake impaired (14 ug/L).

Secchi disc depth measures how far we can lower a disc into the lake until we can't see it anymore. The greater the number the higher the clarity of the water. The standard is 4.5 feet, but secchi depth measured on Pleasant Lake averages 10 feet.

Overall, the water quality of Pleasant Lake is excellent and is improving by all measures.

We encourage continued monitoring so that if anything changes, we can work with lake residents to address issues.

Thank you again to the wonderful volunteers on Pleasant Lake!

OAK REALTY
Seriously Local

LAKES
LANDSCAPING LLC

- Landscape • Outdoor Services
- Mosquito & Tick Control

763-204-4300

Support those who support PLIA! Mention you saw their ad and thank them!

Dingmann
MARINE
Service and Repair

www.dingmannmarine.com | 320-274-8688

Stop in!

BRIDAL CUSTOM DESIGN DIAMONDS
TIMEPIECES APPRAISAL REPAIR

Miller's
JEWELRY

86 Oak Ave. N, Annandale www.millers-jewelry.com

Homestyle
Country Cafe

OPEN 7 DAYS A WEEK
Mon - Wed 7am - 3pm
Thur - Fri 7am - 8pm extended hours
Sat 7am - 3pm
Sun 7am - 1pm

95 Elm St. E
Hwy 55 - Annandale
274 - 1404

Breakfast • Lunch
Dine In or Take Out

Broasted Chicken - Our Specialty

Tuesday
Unlimited Spaghetti

Wednesday
Broasted Chicken Buffet

Pick 2:
\$6.95 - Soup & Garden Salad
or Slice of Pie

Weekly Specialties

Check Facebook for our weekly specialty salad, sandwich, burger, or dessert!

Petty Brothers Meats, Inc.

Old Fashioned Meat Market

320 Elm St. Hwy. 55
Annandale, MN 55302 **320-274-5615**

"Don't go to the lake without us!"

A-1 MARINE INC.
Highway 55 West, Annandale, MN 55302
320-274-8227

FUN ON THE LAKE BEGINS HERE WITH A DIVERSE LINE OF PRODUCTS & SERVICES.

SALES

- Pontoons
- Docks
- Lifts
- Used Boats & Motors
- Dock Tires
- Pontoon Trailer Rentals
- Full Line of Parts & Accessories

SERVICE

- Dock & Lift Installation
- Repair Boats, Motors
- Shrink Wrap
- Trained Techs
- Winterizing by Full Factory
- Maintenance
- Indoor & Outdoor Storage
- 1 Hour Winterizing

STOP IN TO SEE OUR INVENTORY, CALL OR VISIT US ONLINE TODAY!

Scout Dav **WWW.A1MARINEINC.COM**



Southbrook GOLF CLUB

Pleasant Lake GOLFER SPECIAL

2 for \$50 Valid Mon - Fri anytime.
or Weekends/holidays after
4 for \$90 2 pm. Mention this ad
 to receive rates.

9 holes w/cart only \$14
after 5 pm everyday.

www.southbrookgolf.com
320-274-2341

J&J MARINE, Inc.

SALES & SERVICE "We Rock the Boat!"



Are you ready for Spring? WE ARE!

- Full Line of Parts & Accessories
- Pontoon Trailer Rentals
- Indoor & Outdoor Storage, Shrink Wraps
- Winterizing by Full Factory Trained Techs










jjmarineinc.com • 320-236-3625
4 miles West of Annandale • 14882 State Hwy. 55 • South Haven
Monday-Friday: 8 a.m.-6 p.m. • Saturday: 8 a.m.-3 p.m. • Sunday: Closed

DOCKS & LIFTS



Your Central Minnesota Boating Headquarters
and Outdoor Power Equipment Dealer

-New Boats - Pre-owned Boats
 -Docks & Lifts -Service -Lawn Mowers
jjmarineinc.com 320-236-3625

Support those who support PLIA! Mention you saw their ad and thank them!

HOWARD'S Plumbing, Heating & AC, Inc.

Trustworthy Service since 1961

Buck Howard

Master Plumber • Lic. #063048-PM

Office: 320-274-8913

Fax: 320-274-2075

715 Norway Drive E.
Annandale, MN 55302

www.HowardsPlumbingInc.com



World Class Products,
Exceptional Service
www.anchor-dock.com

**ANCHOR
DOCK & LIFT**

(320) 274-6500



BK's Dock and Barge Services LLC

Based out of Cold Spring...Insured...Lake Service Provider

612-597-3914

Call or Text for Free Estimates!



PeakSprayFoamLLC.com

612-562-7823

Spray Foam • Air Barrier • Waterproofing
Insulation • Home Energy Consulting



**BACKYARD
REFLECTIONS**

We Create Outdoor Dreams

Annandale, MN | Nisswa, MN | www.backyardmn.com | 320-274-6336

**Specializing In Home & Cabin
Insect Pest Control**

HEART OF THE LAKES

- Ants
- Asian Lady Beetles
- Box Elders Bugs
- Carpenter Bees
- Paper Wasps
- Spiders
- Yellow Jackets



Steve Kuefler

Owner/Operator
MDA Company License #20165982
MN SPCA #20175641

Call or Text

320-282-4361

*Specializing in home & cabin
insect pest control*

PEST CONTROL LLC

Call or Text 320-282-4361

Locally Owned and Operated

Annandale
**ART & TEXTILE
CENTER**

HOME OF THE *Heart of the Lakes Weavers*

**Unique art, fine craft, and
beautifully woven items
created on-site; PLUS
weaving and creative classes.**

Open Tues-Fri 10-5 & Sat 10-2








Made in Minnesota

Home of the Heart of the Lakes Weavers



**Located at 10 Oak Ave N.
Annandale, MN 55302
Ph 320-261-5216**

Follow us on Facebook



Your Schacht Dealer

Support those who support PLIA! Mention you saw their ad and thank them!

BRONDER
CONSTRUCTION

NEW CONSTRUCTION • REMODELING
 GENERAL CONTRACTING

320.282.3042

 **State Farm**[®]

David Burd Agency

320 274-3185
 davidcburd.com



Dusty's Dock Services
 Dock & Lift- Install & Removal

261 Church St
 South Haven , MN 55382

Dusty
 Nicka

dustin.nicka@yahoo.com
 320-333-5405

dustin.nicka@yahoo.com
 320 - 333 - 5405



LUNDEEN
BROS 

FAITH • FAMILY • FRIENDS • FORDS - SINCE 1920

Sales 320 - 274 - 8211
Service 320 - 274 - 8211

870 Elm St. E. (Hwy. 55) Annandale

 www.lundeenford.com 

Support those who support PLIA! Mention you saw their ad and thank them!

 **Country**
Chev.com

ANNANDALE 320-274-3064



Let us take care of the rest.

For all your business print, mail and signage needs.

SOC2 certified providing peace of mind that your information is protected and secure.

impressive print

651.644.5979 | impressiveprint.com
1995 Oakcrest Avenue • Roseville, MN 55113

Invasive Update

KYLE BAUMAN, VICE PRESIDENT

This summer we treated 40 acres for Curly-leaf Pondweed, and Eurasian Water Milfoil was not found last year, but we are still checking for it as part of our surveys.

1 acre at the County landing was treated for Starry Stonewort. Divers surveyed the area, harvested the Starry Stonewort and Mizzzen was applied. Another survey and dive was done on both landings and... no news is good news! Steve McComas searched the Pleasant Lake accesses with scuba diving on September 13th. He did not observe any SSW, so there is nothing to treat at this time. Indications are Starry is under control at this time, and we will start the search again next spring!

Finally, as we have stated before, the zebra mussels are hopefully approaching a 'peak'.

A Special Thank You

Thank you to Gloria Warner and family for the memorials in memory of Dave Warner, Steve McComas of Blue Water Science for speaking at our Annual Meeting, Our advertising businesses, Oak Realty and Dingmann Marine for sponsoring 'Oak on the Water', Maggie Nilson for the newsletter layout, lake residents for sharing pictures of Pleasant Lake life, Kyle Bauman and Kris Schwickerath for hosting Annandale queen candidates on their boats, John Sedey for water clarity readings over the years, and Impressive Print for donating our newsletter printing.

Fall Leaves Out of Lake

As the leaves start to fall this autumn, remember to rake or blow your leaves away from the lake and not into it. Also, use caution when blowing them in the street as they can end up in storm drains which will eventually bring them back to the lake.

Raking or blowing leaves into the lake can introduce an abundance of decomposing leaves which release phosphorus, raising nutrient levels. This, in turn, can trigger unwanted algae blooms and foster increased aquatic weed growth.

It only takes one pound of phosphorus to produce 500 pounds of algae in our lakes!





Pleasant Lake Improvement Association

PO Box 71, Annandale, MN 55302

Thank you for your support.
Please be sure to remit your
membership dues to:
**Pleasant Lake Improvement
Association
P.O. Box 71
Annandale, MN 55302**



***Annual Membership Dues \$50.00
Membership is from January 1-December 31.**

***Water Quality Improvement Fund \$ _____
Any additional donations will enhance our efforts
in keeping our lake clean and combating invasive
plants thus improving water quality.**

Total: \$ _____

Current Board Members

President: Kevin Bergstrom
Vice President: Kyle Bauman
Secretary: Gale Bergstrom

Treasurer: Kelli Bronder
Director: Jill Gruys
Director:

Director: Kris Schwickerath
Director: Beth-Alison Berggren
Director:

Contact your PLIA Board with questions, comments, concerns or if you would like to join the PLIA Board at pliamn@yahoo.com.